

Please check the examination details below before entering your candidate information

Candidate surname

Other names

Centre Number

Candidate Number

--	--	--	--	--

--	--	--	--

Pearson Edexcel International Advanced Level

Time 1 hour 30 minutes

Paper
reference

WMA11/01

Mathematics

**International Advanced Subsidiary/Advanced Level
Pure Mathematics P1**

You must have:

Mathematical Formulae and Statistical Tables (Yellow), calculator

Total Marks

Candidates may use any calculator permitted by Pearson regulations. Calculators must not have the facility for symbolic algebra manipulation, differentiation and integration, or have retrievable mathematical formulae stored in them.

Instructions

- Use **black** ink or ball-point pen.
- If pencil is used for diagrams/sketches/graphs it must be dark (HB or B).
- **Fill in the boxes** at the top of this page with your name, centre number and candidate number.
- Answer **all** questions and ensure that your answers to parts of questions are clearly labelled.
- Answer the questions in the spaces provided
– *there may be more space than you need.*
- You should show sufficient working to make your methods clear. Answers without working may not gain full credit.
- Inexact answers should be given to three significant figures unless otherwise stated.

Information

- A booklet 'Mathematical Formulae and Statistical Tables' is provided.
- There are 10 questions in this question paper. The total mark for this paper is 75.
- The marks for **each** question are shown in brackets
– *use this as a guide as to how much time to spend on each question.*

Advice

- Read each question carefully before you start to answer it.
- Try to answer every question.
- Check your answers if you have time at the end.

Turn over ►

P66645A

©2021 Pearson Education Ltd.

1/1/1/




Pearson

Question 4 continued

DO NOT WRITE IN THIS AREA

DO NOT WRITE IN THIS AREA

DO NOT WRITE IN THIS AREA

Lined writing area for the answer to Question 4.

Q4

(Total 5 marks)



P 6 6 6 4 5 A 0 9 3 2

DO NOT WRITE IN THIS AREA

Question 5 continued

Lined area for writing the answer to Question 5.

Leave blank

Q5

(Total 8 marks)



6. **In this question you must show all stages of your working.**

Solutions relying on calculator technology are not acceptable.

A curve C has equation $y = f(x)$ where

$$f(x) = 2(x + 1)(x - 3)^2$$

(a) Sketch a graph of C .

Show on your graph the coordinates of the points where C cuts or meets the coordinate axes.

(3)

(b) Write $f(x)$ in the form $ax^3 + bx^2 + cx + d$, where a, b, c and d are constants to be found.

(3)

(c) Hence, find the equation of the tangent to C at the point where $x = \frac{1}{3}$

(4)

DO NOT WRITE IN THIS AREA

DO NOT WRITE IN THIS AREA

DO NOT WRITE IN THIS AREA



Leave
blank

Question 6 continued

Lined area for writing the answer to Question 6.

DO NOT WRITE IN THIS AREA

DO NOT WRITE IN THIS AREA

DO NOT WRITE IN THIS AREA



Question 6 continued

Lined writing area consisting of 30 horizontal lines for the student to answer the question.

DO NOT WRITE IN THIS AREA

(Total 10 marks)

Q6



7.

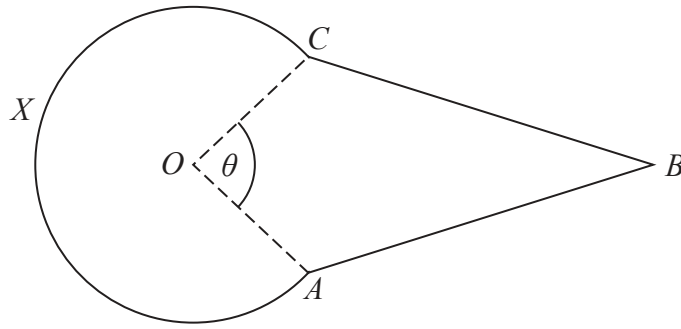


Figure 3

Figure 3 shows the design for a sign at a bird sanctuary.

The design consists of a kite $OABC$ joined to a sector $OCXA$ of a circle centre O .

In the design

- $OA = OC = 0.6\text{ m}$
- $AB = CB = 1.4\text{ m}$
- Angle $OAB = \text{Angle } OCB = 2\text{ radians}$
- Angle $AOC = \theta\text{ radians}$, as shown in Figure 3

Making your method clear,

(a) show that $\theta = 1.64\text{ radians}$ to 3 significant figures, (4)

(b) find the perimeter of the sign, in metres to 2 significant figures, (2)

(c) find the area of the sign, in m^2 to 2 significant figures. (4)



Question 7 continued

DO NOT WRITE IN THIS AREA

DO NOT WRITE IN THIS AREA

DO NOT WRITE IN THIS AREA



Question 7 continued

Handwritten response area for Question 7 continued, consisting of approximately 30 horizontal lines.

DO NOT WRITE IN THIS AREA

(Total 10 marks)

Q7

--	--



8.

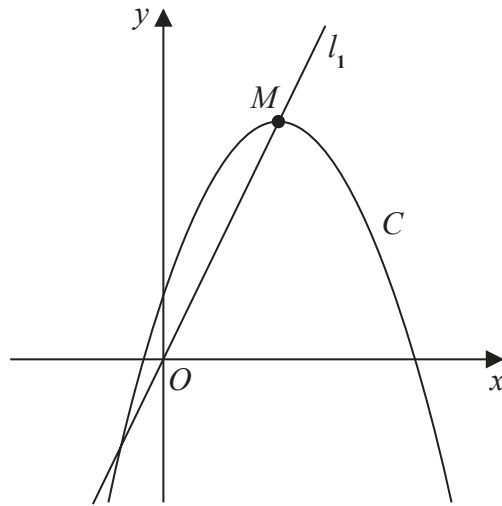


Figure 4

Figure 4 shows a sketch of the curve C with equation

$$y = 4 + 12x - 3x^2$$

The point M is the maximum turning point on C .

(a) (i) Write $4 + 12x - 3x^2$ in the form

$$a + b(x + c)^2$$

where a , b and c are constants to be found.

(ii) Hence, or otherwise, state the coordinates of M .

(5)

The line l_1 passes through O and M , as shown in Figure 4.

A line l_2 touches C and is parallel to l_1

(b) Find an equation for l_2

(5)



9. In this question you must show all stages of your working.
Solutions relying on calculator technology are not acceptable.

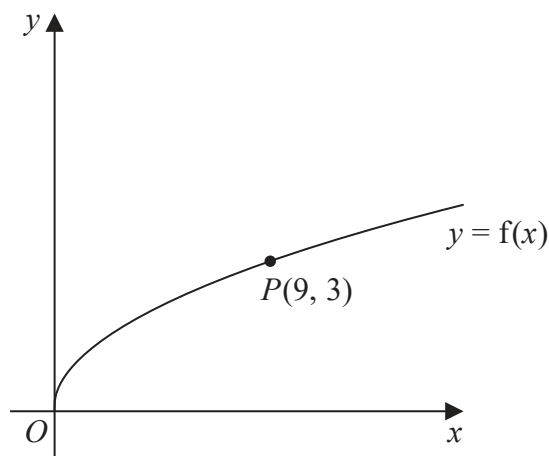


Figure 5

Figure 5 shows a sketch of the curve with equation $y = f(x)$ where

$$f(x) = \sqrt{x} \quad x > 0$$

The point $P(9, 3)$ lies on the curve and is shown in Figure 5.

On the next page there is a copy of Figure 5 called Diagram 1.

- (a) On Diagram 1, sketch and clearly label the graphs of

$$y = f(2x) \quad \text{and} \quad y = f(x) + 3$$

Show on each graph the coordinates of the point to which P is transformed.

(3)

The graph of $y = f(2x)$ meets the graph of $y = f(x) + 3$ at the point Q .

- (b) Show that the x coordinate of Q is the solution of

$$\sqrt{x} = 3(\sqrt{2} + 1)$$

(3)

- (c) Hence find, in simplest form, the coordinates of Q .

(3)

DO NOT WRITE IN THIS AREA

DO NOT WRITE IN THIS AREA

DO NOT WRITE IN THIS AREA



Question 9 continued

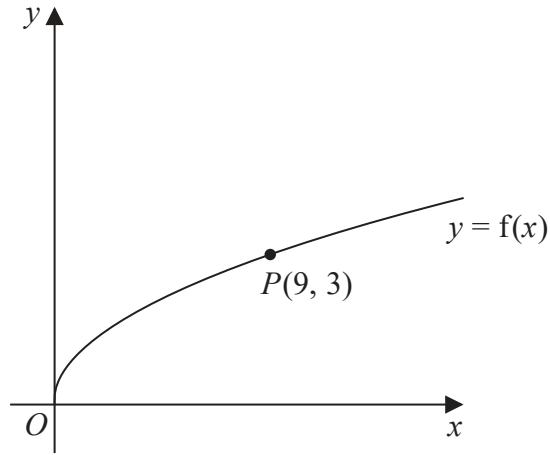


Diagram 1

Turn over for a copy of Diagram 1 if you need to redraw your graphs.

A series of horizontal lines provided for the student to draw their graph.

DO NOT WRITE IN THIS AREA

DO NOT WRITE IN THIS AREA

DO NOT WRITE IN THIS AREA



10. A curve has equation $y = f(x)$, $x > 0$

Given that

- $f'(x) = ax - 12x^{\frac{1}{3}}$, where a is a constant
- $f''(x) = 0$ when $x = 27$
- the curve passes through the point $(1, -8)$

(a) find the value of a . (3)

(b) Hence find $f(x)$. (4)

DO NOT WRITE IN THIS AREA



